



## CHEVY CHASE HISTORICAL SOCIETY

NEWSLETTER

SPRING 2008



### Former Chevy Chase Country Day School Is Setting for Spring Gala

This year, the Chevy Chase Historical Society's annual Spring Gala on May 4 featured the residence of hostess Robin Heller, at 19 Grafton Street, formerly the Chevy Chase Country Day School. Constructed in the late nineteenth century in the Shingle Style, the residence housed the school from 1923 to the early 1960s. "Chevy Chase Day" was established by Dr. Stanwood Cobb, who lived in the house until his death at age 101 in 1983. Dr. Cobb was an educator, an author, and the founder of the Progressive Education Association.

An interesting highlight of the supper was that among the guests were three persons who had attended the school and one guest who had taught there. CCHS thanks Susan Elwell

and Julie Thomas for compiling information on 19 Grafton Street and for assembling a fascinating exhibit that was on view during the event.

We owe a debt of gratitude to Robin Heller, who was unfailingly gracious and flexible. We also recognize the invaluable assistance of the CCHS Supper Committee, whose members contributed much talent, time, and energy to insure the success of this event. A special thank you goes to Mary Sheehan, CCHS President, for her guidance and her meticulous attention to detail as well as to the big picture.

-- Fran Schorr and Cathy Wolf, Gala Co-Chairs

*Celebrating One of America's First Streetcar Suburbs*



The history of the house and former school at 19 Grafton Street.



Look up! Marjorie Zapruder, Max and Mary Van Schendt, Richard Marsh, Marian Blakey, Christin



On a lovely evening, dining al fresco



Trisha Fang, in the striking hat, talks to greeters Julie Thomas and Eleanor Ford

## Sparkling Weather, Décor Lend Festive Air

The sun shone brilliantly on CCHS' anniversary celebration on June 4 at 19 Grafton Street. The mood was festive as many of them wearing vintage hats, were dazzled by the creative, colorful interior. Music by jazz band led by the faculty and Chairman of the Jazz Department, perfectly suited the ambience. The restaurant, again produced a wonderful evening. The staff served our guests expertly and pleasantly. A special presentation for his many years of service.



Angela Lancaster and Katie Farr chat in a quiet corner



The groaning board



President Mary Sheehan presents CCHS' gift to our host, Robin Heller



Cathy and Scot McCulloch chat with Andy Caffey in the period straw hat



(l. to r.) Frances Stickles, Carol Coffin, Martha Jones, Peter Kilborn, George Ford, Susan Kilborn, and Fadie Winslow



Alice and Jharry Breed lend a touch of class



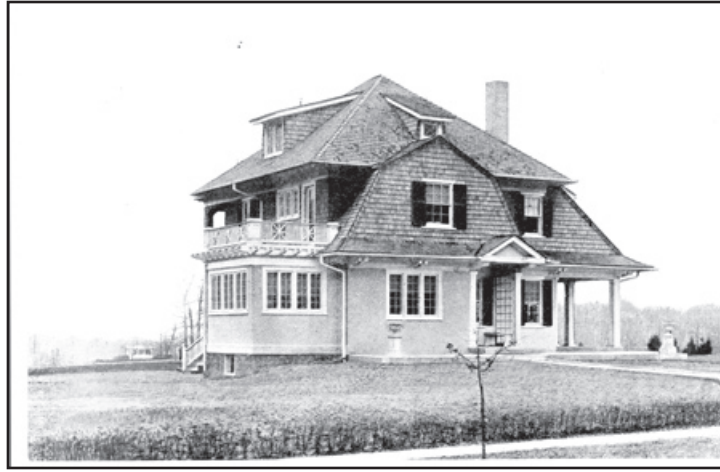
Three former students of The Chevy Chase Country Day School



Chevy Chase Historical Society



Friends meet on the terrace: John and Kelly Derrick, Kirsten Williams and husband, John Dorsey



## ***“MYSTERY!”***

*“Mystery!” is a regular feature of the newsletter. We invite all sleuths to help CCHS identify the subjects of “mystery” photographs contained in the society’s photographic collection.*

This unidentified address comes from a 1916 sales brochure for Chevy Chase called “Chevy Chase for Homes.” The Thomas J. Fisher & Co. sales office used this pamphlet with beautiful homes like this to lure buyers. If this home looks familiar to you, please contact us at [www.chevyCHASEhistory.org](http://www.chevyCHASEhistory.org) or call (301) 656-6141. The first person to solve this mystery wins a package of CCHS postcards!

Last issue’s mystery photo was correctly identified by Elizabeth Dugan as 3 West Irving Street. Another mystery solved by our observant members—thanks!



CHEVY CHASE  
HISTORICAL SOCIETY

P.O. Box 15145  
CHEVY CHASE, MARYLAND 20825

NON-PROFIT ORG.  
U.S. POSTAGE  
PAID  
CHEVY CHASE, MD  
PERMIT NO. 5513



# CHEVY CHASE HISTORICAL SOCIETY

P.O. Box 15145  
CHEVY CHASE, MARYLAND 20825

### Officers

Mary Sheehan . . . . . President  
Marilyn Montgomery . . . . . Vice President  
Alice Kinter . . . . . Recording Secretary  
Helen Secrest . . . . . Corresponding Secretary  
Margaret Adelfio . . . . . Treasurer

### Directors

Angela Lancaster . . . . . Past President  
Julie Thomas . . . . . Member-at-Large  
Sarah Fry . . . . . Member-at-Large  
Carol Coffin . . . . . Advisor to the Board  
Mary Anne Tuohey . . . . . Advisor to the Board  
Fran Schorr . . . . . Advisor to the Board  
Judy Robinson . . . . . Advisor to the Board

### Committee Chairs

Archives . . . . . Joan Marsh  
Communications . . . . . Mary Anne Hoffman  
Exhibits . . . . . Susan Elwell  
Finance . . . . . Angela Lancaster  
Friends of C.C. Circle . . . . . Barbara Price  
House Research . . . . . Alice Kinter  
Maps . . . . . Carol Coffin  
Membership . . . . . Helen Secrest  
Oral History . . . . . Julie Thomas  
Photographs . . . . . Eleanor Ford  
Programs . . . . . Marilyn Montgomery  
Technology . . . . . Evelyn Gerson  
Volunteers . . . . . Mary Anne Tuohey

Newsletter Editor . . . . . Wendy Adams  
Newsletter Production . . . . . John Tuohey

CCHS Archive and Research Center  
Evelyn Gerson, Director  
Chevy Chase Community Library  
8005 Connecticut Avenue  
Chevy Chase, MD 20815  
Tel: 301-656-6141 Fax: 301-656-5114  
www.chevychasehistory.org  
E-mail: chevychasehistory@msn.com  
Open 1:00 to 5:00 p.m.  
on Tuesdays and by appointment.

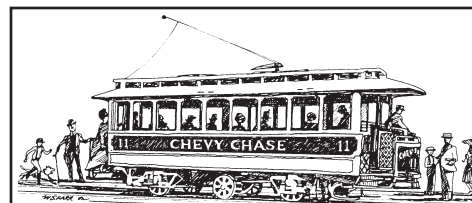
The Chevy Chase Historical Society is a nonprofit organization founded in 1981 to discover, record, and preserve the history of the Maryland and Washington neighborhoods known as Chevy Chase.

## Recent Acquisitions

“Recent Acquisitions” is a regular feature in the newsletter, describing documents and other items that are acquired the society’s Archive and Research Center

### Donations

1. Several blueprints of 32 West Kirke Street. Donated by Elizabeth Anne Altman.
2. Three 1892 maps of Chevy Chase with prices for various lots in the Village, and petition of Percy Street (now Thornapple Street) residents to extend the street from Brookville Road to Connecticut Avenue. Donated by Elaine Dynes in honor of her father, Charles E. Dynes.
3. Seventeen letters written by Otterborne (now Section Five) resident R. I. Geare regarding the paving of and improvements of Percy Street; October 1914 Tax Assessment for Otterborne residents; and list of property owners in Otterborne circa 1914.
4. Papers, memoirs, and photographs of the Simpson Family who lived at 7315 Brookville Road. Donated by Rosemary Flint.
5. Annual Meeting notes of the Chevy Chase Village Council, 1984-86. Donated by Ephraim Jacobs.
6. Five photographs of a snowstorm in February 1987. Donated by John Kay.
7. Several newspaper clippings (1928-1930) and maps collected and donated by Anita Lovejoy of Wayne, Maine, from when her grandfather, Charles C. Clark, lived at 21 West Irving Street.
8. May 1938 movie listing for the State Theater on Wisconsin Avenue, and circular called “Shopping Tips of Bethesda-Chevy Chase.” Donated by Sheila Pitchford.
9. Book on *Montgomery County: A Pictorial History* by Margaret Coleman; yearbook for Leland Junior High school, *The Pine Log*, for the years 1956, 1957, and 1958; *The Pine Tree* for the years 1959 and 1961; Leland Junior High Basketball pin; program and photograph of the Teen Fashion Show held at the Woman’s Cooperative Farm Market; and Chevy Chase School class pictures from 1949 through 1954. Donated by Marilyn Sutherland.
10. La Ferme matchbox; envelope postmarked 1934 addressed to Marjorie Reed, Chevy Chase School; the 1993 Bethesda-Chevy Chase Alumni Directory; and several postcards of Connecticut Avenue. Donated by Julie Thomas.



## CHEVY CHASE “DISCOVERS” ITS PAST

Chevy Chase residents of all ages attended the society’s “Discovery Day” on March 15. Activities focused on this year’s theme, “Discover the Past, Personality, and Potential of the Chevy Chase House.” An architectural trolley tour, informative workshops, and children’s activities were highlights of the event at the Chevy Chase Village Hall.

The trolley tour combined informative details of house design with colorful stories from CCHS’ trove of house histories. Mary Anne Hoffman and Mary Anne Touhey planned and presented the lively tours through Chevy Chase Village. The open Old Town Trolley lent an authentic feel to the tour.

Workshops included Fran Schorr’s house color and design, Mimi McBride’s contemporary landscape for traditional homes, and the society’s informative presentation on conducting a house history.

Children’s hands-on activities included “make your own” historic house and flower pot decorating. In addition, the popular children’s performer, John Henry, led children in singing and dancing. Children and adults alike enjoyed the home-made house shaped cookies and Gifford’s ice cream cones.



Family fun—a jolly hour in the trolley touring the Village



Mary Anne Touhey and Mary Anne Hoffman organize a tour



“Kids at heart” enjoy ice cream provided by Gifford’s Ice Cream Co., a local favorite of many years



Young explorers “discover” how to decorate their flower pots